



Single Family Home

1.810 SQFT



INCORP USA



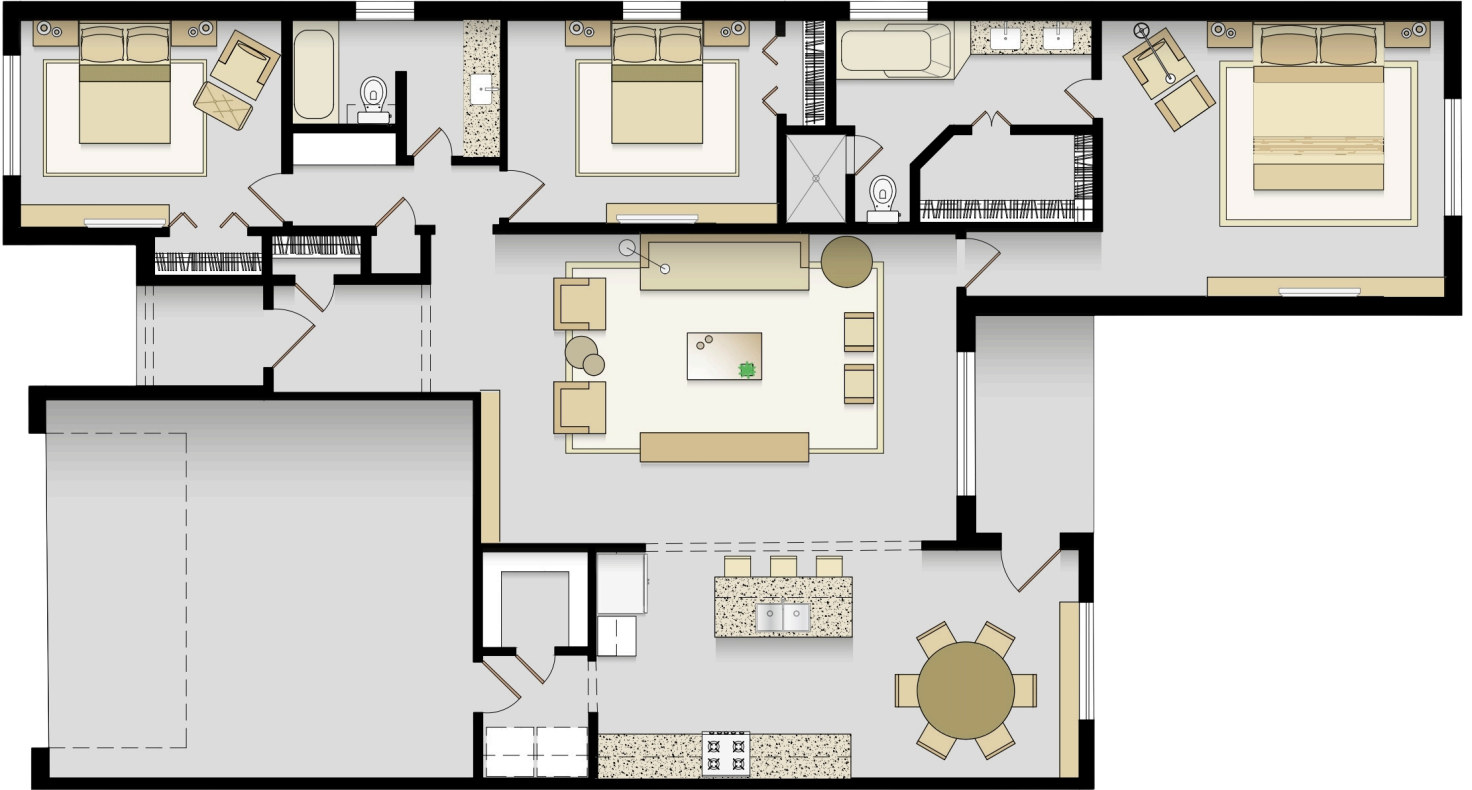
INCORP USA



INCORP USA

 **4**  **2**  **3**

Floor plan is 1,810 sqft, plus a covered patio. 4 bedrooms (including private master suite) with option of 3 bedrooms with office/study. Master bath includes dual vanities; separate jetted tub, and walk-in closet.



1.810 SQFT

 **3**  **2**  **2**

This 1,868 sqft Floor plan has 3 bedrooms, walk-in closet, 2 baths, 2-car garage and a covered porch.

**Single
Family
Home**



1.810 SQFT

 **4**  **2**  **2**

This 1,878 sqft Floor plan has 4 bedrooms, walk-in closet, 2 baths, 2-car garage and a covered porch.

**Single
Family
Home**



SINGLE FAMILY HOME

1.994 SQFT

 **4**  **2**  **3**

Floor plan is 1,994 sqft with 4 bedrooms (including private master suite) or 3 bedrooms with office/study. Master bath includes dual vanities; separate soaker tub, & walk-in closet. Lots of closet & laundry space.



**SINGLE
FAMILY**

Sapphire

HOW YOU CAN BUY
YOUR "DREAM"

by Francois Mercer



INCORP USA
ENTERPRISES

1st floor plan: 2,810 sqft, plus a covered patio. 4 bedrooms (including private master suite) with option of 3 bedrooms with office/study. Master bath includes dual vanities; separate jetted tub, and walk-in closet.



INCORP USA



INCORP USA



INCORP USA