

INCORP USA
ENTERPRISES

**SINGLE
FAMILY
HOME**

2.000 SQFT



INCORP USA



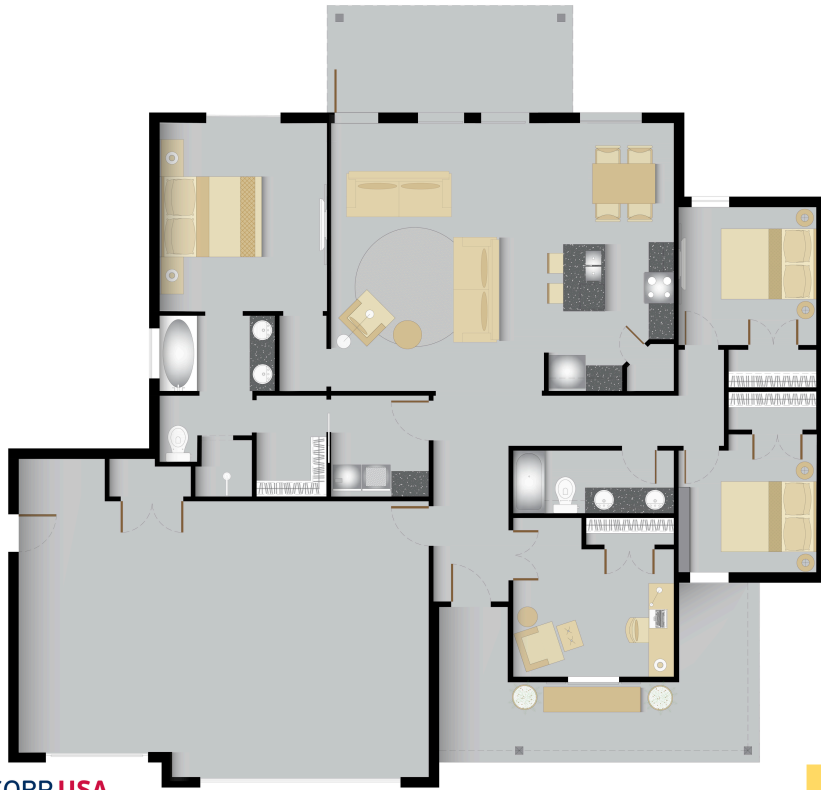
INCORP USA



INCORP USA

 **4**  **2**  **3**

Floor plan is 2,000 sqft, with 4 bedrooms (including private master suite) with option of 3 bedrooms with office/study. Master bath includes dual vanities; separate jetted tub, and walk-in closet.



INCORP USA
ENTERPRISES

**SINGLE
FAMILY
HOME**

2.058 SQFT



INCORP USA



INCORP USA



INCORP USA

 **4**  **2**  **3**

4 bed, 2 baths, with 3-car garage. Huge living room with open concept kitchen / dining. Walk in pantry. 10' ceilings. The master en-suite is tucked away from all secondary bedrooms and boasts dual vanities, garden tub, walk in shower and a 9' x 8' (MOL) walk in closet.



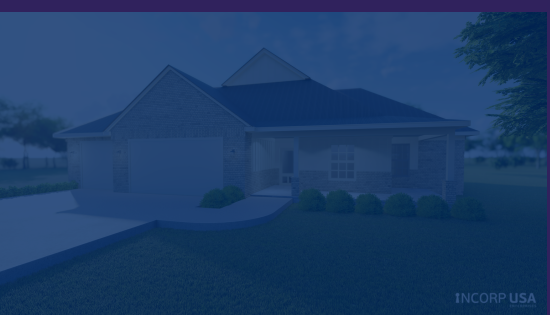
**SINGLE
FAMILY**

Amethyst

2,000 SQFT

**NOW YOU CAN BUY
YOUR "DREAM"**

By Francois Mercer



INCORP USA   **2**  **3**
ENTERPRISES

Floor plan is 2,000 sqft, with 4 bedrooms (including private master suite) with option of 3 bedrooms with office/study. Master bath includes dual vanities; separate jetted tub, and walk-in closet.